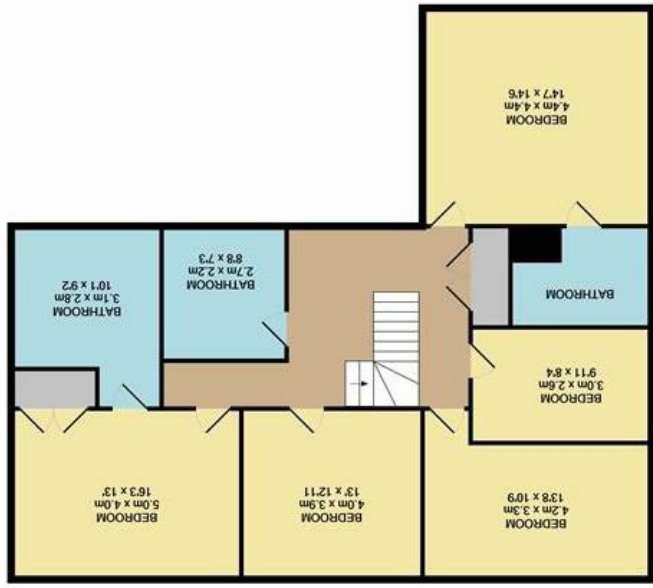


157 FLOOR AREA 134.1 SQ.M (1444 SQ.FT.)
 158 FLOOR AREA 134.1 SQ.M (1444 SQ.FT.)
 159 FLOOR AREA 134.1 SQ.M (1444 SQ.FT.)
 160 FLOOR AREA 134.1 SQ.M (1444 SQ.FT.)
 161 FLOOR AREA 134.1 SQ.M (1444 SQ.FT.)
 162 FLOOR AREA 134.1 SQ.M (1444 SQ.FT.)
 163 FLOOR AREA 134.1 SQ.M (1444 SQ.FT.)
 164 FLOOR AREA 134.1 SQ.M (1444 SQ.FT.)
 165 FLOOR AREA 134.1 SQ.M (1444 SQ.FT.)
 166 FLOOR AREA 134.1 SQ.M (1444 SQ.FT.)
 167 FLOOR AREA 134.1 SQ.M (1444 SQ.FT.)
 168 FLOOR AREA 134.1 SQ.M (1444 SQ.FT.)
 169 FLOOR AREA 134.1 SQ.M (1444 SQ.FT.)
 170 FLOOR AREA 134.1 SQ.M (1444 SQ.FT.)
 171 FLOOR AREA 134.1 SQ.M (1444 SQ.FT.)
 172 FLOOR AREA 134.1 SQ.M (1444 SQ.FT.)
 173 FLOOR AREA 134.1 SQ.M (1444 SQ.FT.)
 174 FLOOR AREA 134.1 SQ.M (1444 SQ.FT.)
 175 FLOOR AREA 134.1 SQ.M (1444 SQ.FT.)
 176 FLOOR AREA 134.1 SQ.M (1444 SQ.FT.)
 177 FLOOR AREA 134.1 SQ.M (1444 SQ.FT.)
 178 FLOOR AREA 134.1 SQ.M (1444 SQ.FT.)
 179 FLOOR AREA 134.1 SQ.M (1444 SQ.FT.)
 180 FLOOR AREA 134.1 SQ.M (1444 SQ.FT.)
 181 FLOOR AREA 134.1 SQ.M (1444 SQ.FT.)
 182 FLOOR AREA 134.1 SQ.M (1444 SQ.FT.)
 183 FLOOR AREA 134.1 SQ.M (1444 SQ.FT.)
 184 FLOOR AREA 134.1 SQ.M (1444 SQ.FT.)
 185 FLOOR AREA 134.1 SQ.M (1444 SQ.FT.)
 186 FLOOR AREA 134.1 SQ.M (1444 SQ.FT.)
 187 FLOOR AREA 134.1 SQ.M (1444 SQ.FT.)
 188 FLOOR AREA 134.1 SQ.M (1444 SQ.FT.)
 189 FLOOR AREA 134.1 SQ.M (1444 SQ.FT.)
 190 FLOOR AREA 134.1 SQ.M (1444 SQ.FT.)
 191 FLOOR AREA 134.1 SQ.M (1444 SQ.FT.)
 192 FLOOR AREA 134.1 SQ.M (1444 SQ.FT.)
 193 FLOOR AREA 134.1 SQ.M (1444 SQ.FT.)
 194 FLOOR AREA 134.1 SQ.M (1444 SQ.FT.)
 195 FLOOR AREA 134.1 SQ.M (1444 SQ.FT.)
 196 FLOOR AREA 134.1 SQ.M (1444 SQ.FT.)
 197 FLOOR AREA 134.1 SQ.M (1444 SQ.FT.)
 198 FLOOR AREA 134.1 SQ.M (1444 SQ.FT.)
 199 FLOOR AREA 134.1 SQ.M (1444 SQ.FT.)
 200 FLOOR AREA 134.1 SQ.M (1444 SQ.FT.)



GROUND FLOOR AREA 154.4 SQ.M (1665 SQ.FT.)



Disclaimer – In accordance with the Property Misdescriptions Act, the company gives notice that all descriptions, references to condition, necessary permissions for use and other details are given in good faith and believed to be correct, but any intending lessees do not rely on them as statements of fact, but must satisfy themselves by inspection or other means, as to their accuracy.

England & Wales	
EU Directive 2002/91/EC	
Very energy efficient - lower running costs	(92 plus) A
	(81-91) B
	(69-80) C
	(55-68) D
	(39-54) E
	(21-38) F
Not energy efficient - higher running costs	(1-20) G
Current	Potential



Spinks Lane | Wymondham | NR18
 Guide Price £725,000 - £750,000



abbotFox Land & New Homes presents this outstanding house within Oak View, a remarkable new gated development neatly positioned on the edge of the popular South Norfolk market town of Wymondham.

This small collection of just five sophisticated, individually designed family homes offer exceptional levels of specification throughout. Carefully considered architectural plans have been devised to grant fantastic contemporary layouts complemented by an abundance of natural light.

Accommodation comprises; reception hall, cloakroom, study, sitting room with wood burning stove, central kitchen with dining room and family room either side (the family room features bi-folding doors to the rear), a utility room, five first floor bedrooms, the principle and guest bedrooms featuring en suites and a separate family bathroom. There is a double garage with electric doors.

In all the plot extends to approximately 0.2 acres (stms).

